



VIP OVERNIGHT and SAFARI CRANE VIEWING EXPERIENCES



Contents

| | |
|----------------------------|-------|
| Introduction | • 1 |
| Accommodations & Amenities | • 2 |
| Itineraries | • 5,6 |
| Contact Info | • 7 |



VIP OVERNIGHT EXPERIENCES AND SAFARIS

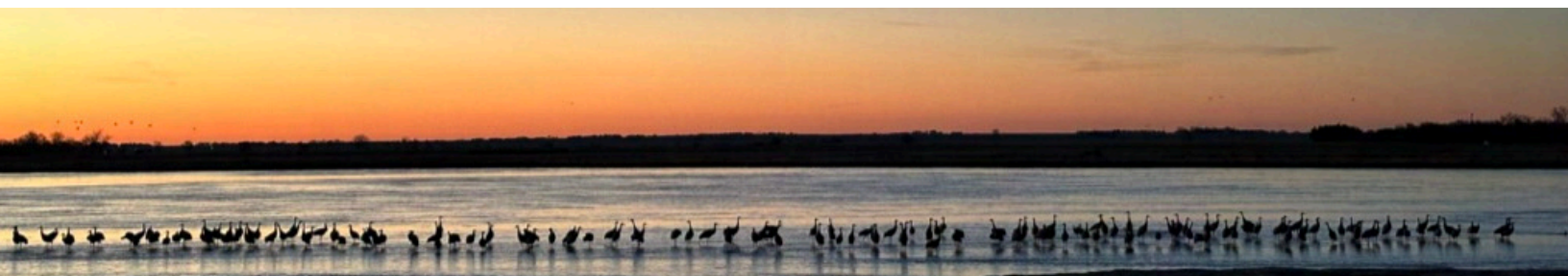
Take your crane viewing adventure to the next level with a premier experience! For each program, up to 28 guests from across the country gather for this exclusive opportunity to engage with fellow travelers and Crane Trust staff. You will have an elevated experience while helping to support Crane Trust's mission and conservation work.

Choose our Overnight VIP Crane Experience or our Two-Night VIP Safari.

Crane viewing experiences are available only in March.

Keep reading for details!

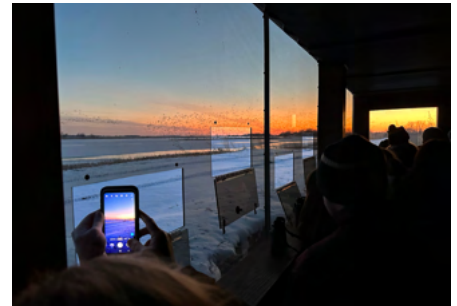
CRANE TRUST PROTECTS PLATTE RIVER
HABITAT FOR MIGRATING CRANES



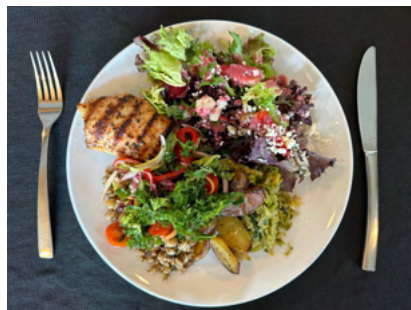
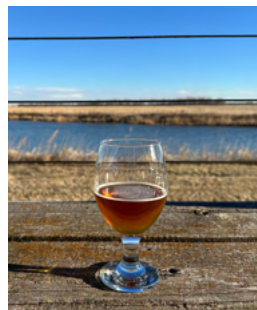
WHAT TO EXPECT

Guided Crane Viewing Experience

View the migration in our exclusive heated Pietrok Family riverfront blinds with Crane Trust experts who provide valuable insights into the science and the mystery of the crane migration and the Platte River ecosystem. The blinds are intentionally designed and placed to provide spectacular vistas of the largest Sandhill Crane roost on the river.



From the Dining Room, take a short van ride to the trailhead, where you disembark and quietly walk to the viewing blinds. After a 90-minute immersive experience in the blind, return to the vans and ride back to enjoy an evening gathering or a hot breakfast. Your experience includes informative and engaging programs and videos about the Sandhill Crane Migration, Crane Trust's mission, and habitat protection in the Central Platte River Valley.



Meals

Your VIP experience includes delicious catered meals* and beverages (alcoholic and non-alcoholic). Enjoy cocktail hour, meals, snacks, and social time with your fellow guests and Crane Trust staff in the Headquarters Dining Room.

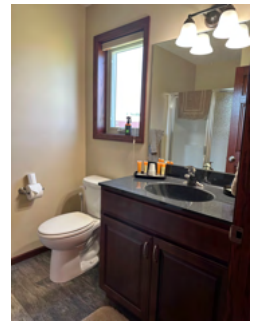


*We try to accommodate most food allergies and sensitivities. You may bring supplemental foods to meet your nutritional needs. Please bring any over-the-counter or prescribed medications.

PREMIER ACCOMMODATIONS

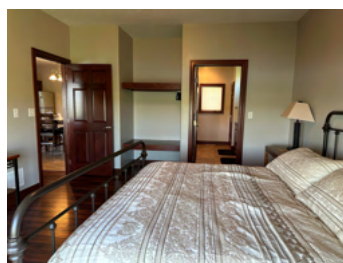
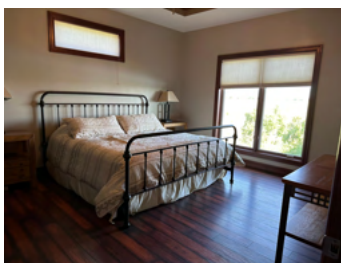
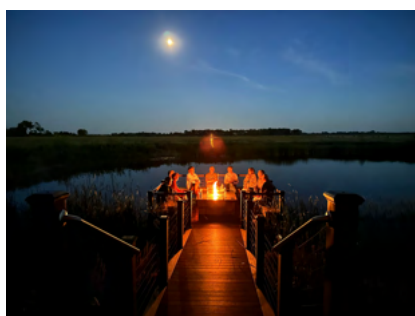
Cottages

Overnight guests enjoy cozy accommodations in fully furnished Legacy Cottages. The cottages each sleep eight guests in four double bedrooms (2 twins or 1 queen bed). Each bedroom has a private bath. The cottages also feature a common area, mini kitchen, and back patio.



Suites

The two luxury *Bay Family Suites* each feature a master bedroom with king bed and master bathroom. Common areas include a large living area and kitchenette with microwave, coffee maker, and full-sized refrigerator, plus a deck with fire pit overlooking the pond. Each suite accommodates two guests.





CRANE TRUST PROPERTY AND AMENITIES

Crane Trust's private Wild Rose Ranch is located in South Central Nebraska on nearly 6,000 acres of lowland tall grass prairie and wet meadows. This rare ecosystem includes an uninterrupted seven-mile stretch of the Platte River, preserved by the Crane Trust as unique habitat that has been used for millennia by Sandhill Cranes, endangered Whooping Cranes, and many other species of animals and plants.

In addition to the cottages where you will stay, the facility encompasses the Crane Trust headquarters, research laboratory, dormitory, meeting spaces, dining room, and outdoor decks with breathtaking views of the prairies and Platte River.



Crane Trust is also home to the beautiful **Nature & Visitor Center**, a unique destination that welcomes travelers and community members throughout the year.

Open year round Monday – Saturday
Open every day in March.

ONE-NIGHT VIP CRANE EXPERIENCE ITINERARY

All-inclusive \$800 (+ booking fees) per Cottage Room (2 guests)
Please inquire about cost for Suites accommodations

DAY 1

Afternoon

- Between 2:45 and 3:45 pm, arrive & check in at the Crane Trust Nature & Visitor Center.
- Just before 4:00 pm, caravan in private cars, led by Crane Trust staff, to Wild Rose Ranch (three-mile drive). Meet your other hosts and get settled into the cottages.

Evening

- Welcome and dinner in the Dining Room *
- Van ride to the trailhead for a quarter-mile walk to the riverfront blinds
- Sunset viewing of cranes returning to the river (approx. 90 minutes)
- Return for dessert, video presentation, and social time before retiring to the cottages.

DAY 2

Morning

- Arise well before dawn for optional coffee and light breakfast.
- Van ride to the trailhead for a quarter-mile walk to the riverfront blinds.
- Sunrise viewing of cranes as they awaken, dance, and display (approx. 90 minutes)
- Return for breakfast, program, social time, and farewells. Checkout time is 10:00 am.

* **Note:** Before Daylight Savings on March 9, 2025, we will provide appetizers before the sunset crane viewing experience. Enjoy dinner, drinks, and dessert afterwards back at the Dining Room.



TWO-NIGHT VIP CRANE SAFARI ITINERARY

All-inclusive \$2,000 (+ booking fees) per Cottage Room (2 guests)
Please inquire about cost for Suites accommodations

DAY 1

Afternoon

- Between 2:45 pm and 3:45 pm, arrive & check in at the Crane Trust Nature & Visitor Center
- Just before 4:00 pm, caravan in private cars, led by Crane Trust staff, to Wild Rose Ranch (three-mile drive). Meet your other hosts and get settled into the cottages.

Evening

- Welcome and dinner in the Dining Room *
- Van ride to the trailhead for a quarter-mile walk to the riverfront blinds
- Sunset viewing of cranes returning to the river (approx. 90 minutes)
- Return for dessert, video presentation, and social time before retiring to the cottages

DAY 2

Morning

- Arise well before dawn for optional coffee and light breakfast
- Van ride to the trailhead for the walk to the riverfront blinds
- Sunrise viewing of cranes as they awaken, dance, and display (approx. 90 minutes)
- Return for breakfast and video presentation in the Dining Room
- Enjoy approximately two hours of free time to visit, hike, relax, explore with your camera, or browse the gift shop and art gallery in the Nature & Visitor Center
- 12:00 Noon – Lunch in the Dining Room

Afternoon

- 1:00 – 3:00 pm (approx.): Guided excursions in our vans may include a tour to see our genetically diverse bison herd and/or visits to unique private prairies and historic sites to find cranes foraging in daytime. Learn about local ecology and our work to preserve habitat.
- Afternoon free time to socialize, hike, rest, explore with your camera, or browse the gift shop and art gallery in the Nature & Visitor Center

Evening

- Dinner and drinks in the Dining Room *
- Van ride to the trailhead for the walk to the riverfront blinds
- Sunset viewing of cranes returning to the river (approx. 90 minutes)
- Return for dessert, video presentation and social time before retiring to the cottages

DAY 3

Morning

- Arise well before dawn for optional coffee and light breakfast
- Van ride to the trailhead for the walk to the riverfront blinds
- Sunrise viewing of cranes as they awaken, dance, and display (approx. 90 minutes)
- Return for breakfast, program, social time, and farewells. Checkout time is 10:00 am.

* **Note:** Before Daylight Savings on March 9, 2025, we will provide appetizers before the sunset crane viewing experience. Enjoy dinner, drinks, and dessert afterwards back at the Dining Room.

CRANE TRUST
Nature & Visitor Center

9325 S. Alda Road
Wood River, NE 68883
(308) 382-1820

Airport Information

There are four airports within a few hours drive of the Crane Trust:

- Omaha Eppley Airport (OMA) : 2+ hours
- Lincoln Airport (LNK) : 90 minutes
- Kearney Regional Airport (EAR) : 40 minutes
- Grand Island Central Nebraska Regional Airport (GRI) : 25 minutes

If you have questions about VIP Overnight Experiences, please contact:

Sandra Douglas
(308) 833-3808
reservations@cranetrust.org

We look forward to experiencing the Great Crane Migration with you!



Crane Trust Nature & Visitor Center • 9325 S. Alda Road • Wood River, NE 68883
cranetrust.org